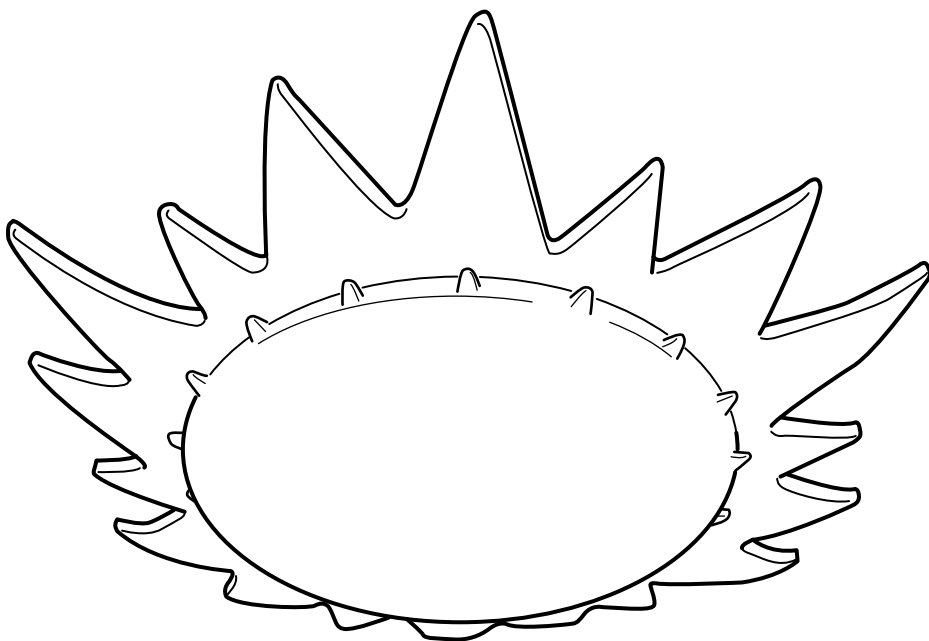


# SMILA SOL



Design and Quality  
IKEA of Sweden



**ENGLISH**  
INSTALLATION INSTRUCTIONS

## CAUTION:

Before starting, turn off power at main circuit panel.

**FRANÇAIS**  
INSTRUCTIONS D'INSTALLATION

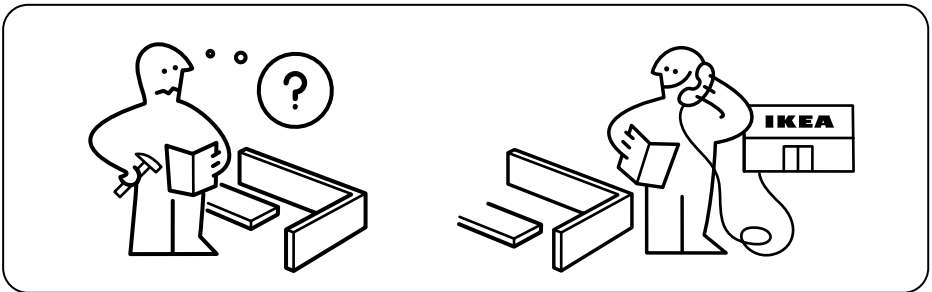
## ATTENTION:

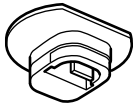
coupez l'alimentation avant de procéder à l'installation.

**ESPAÑOL**  
INSTRUCCIONES DE MONTAJE

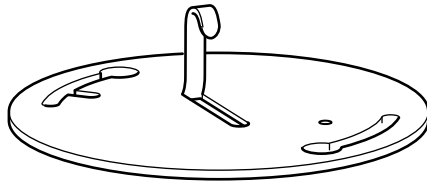
## ADVERTENCIA:

Antes de comenzar el montaje, cortar la luz en el cuadro general.

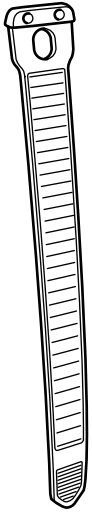




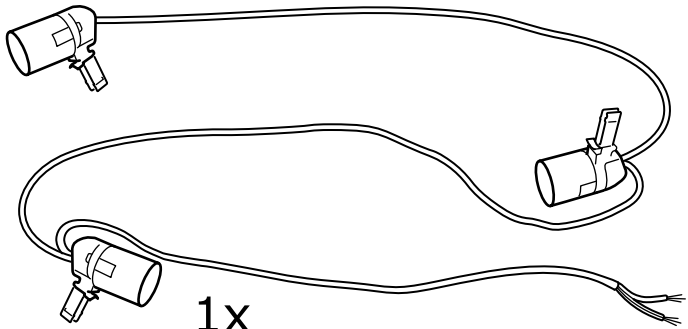
1x



1x



1x

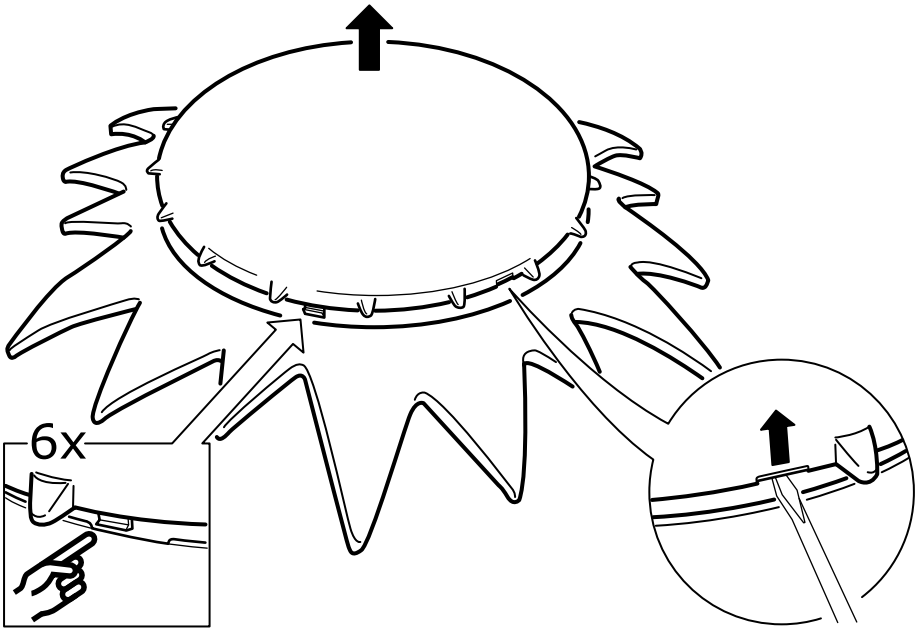


1x

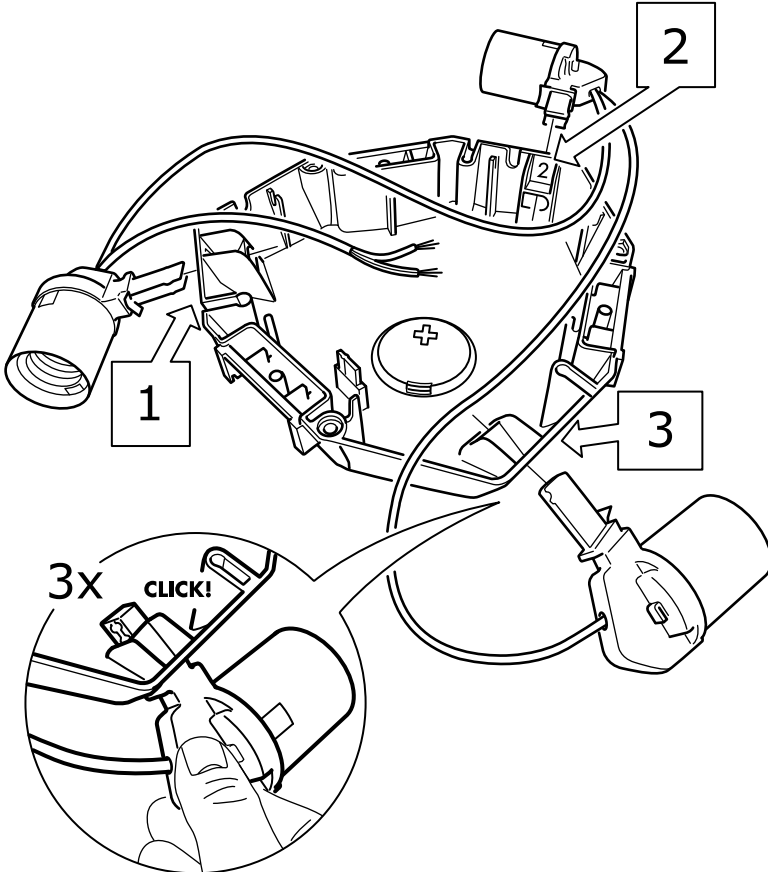
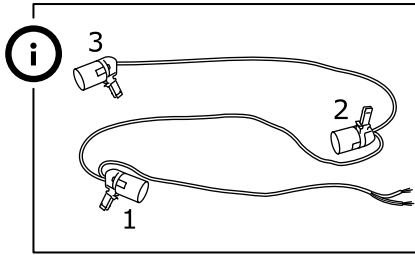


3x

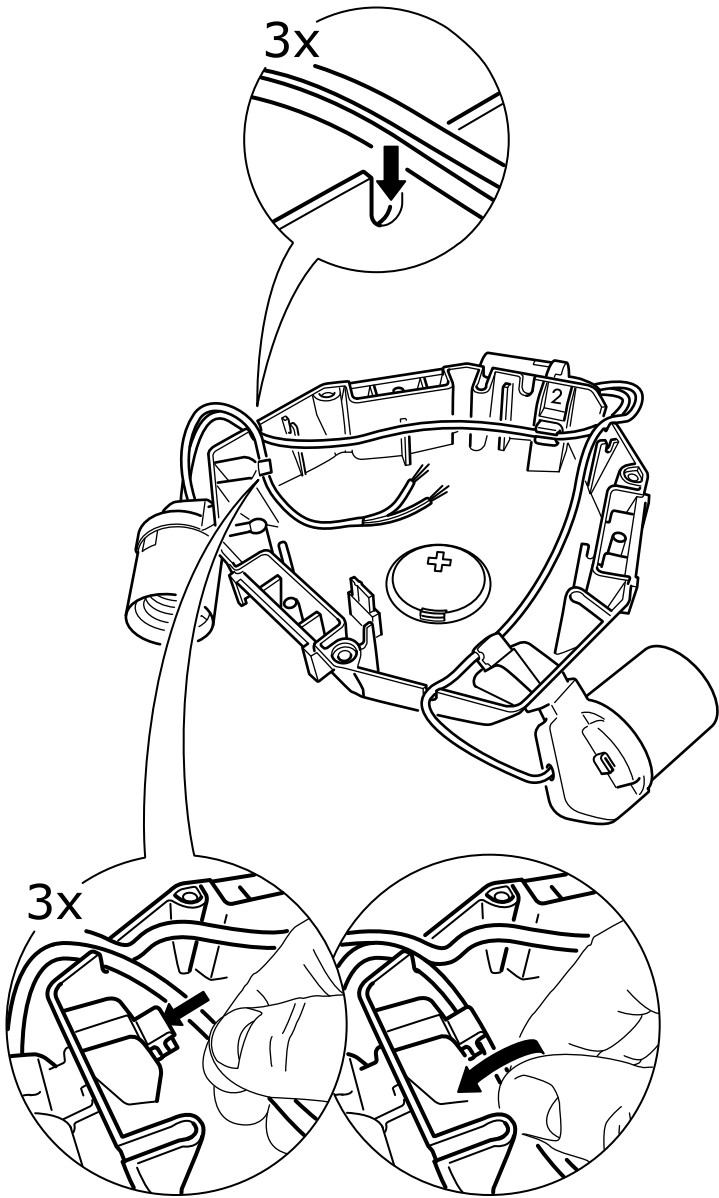
1

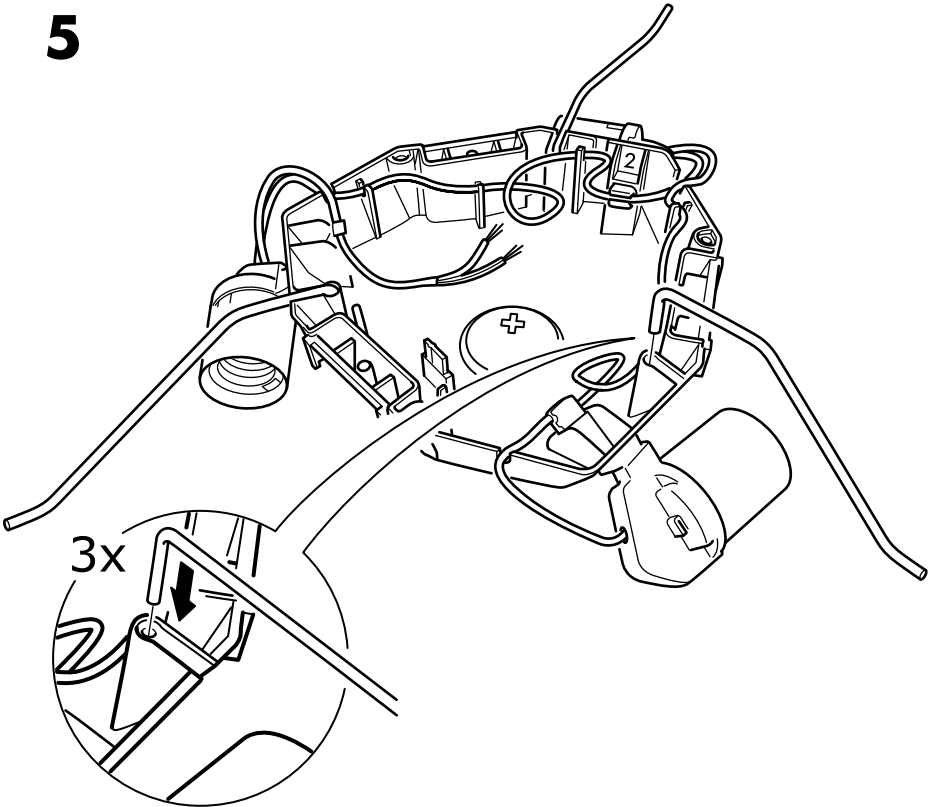
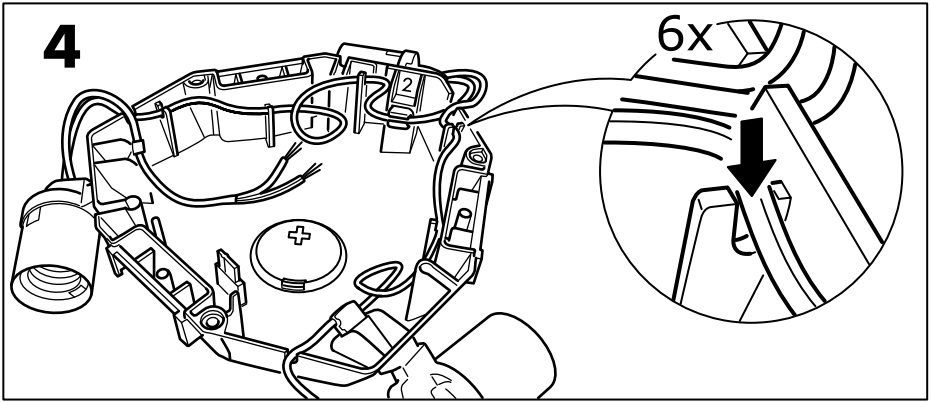


**2**

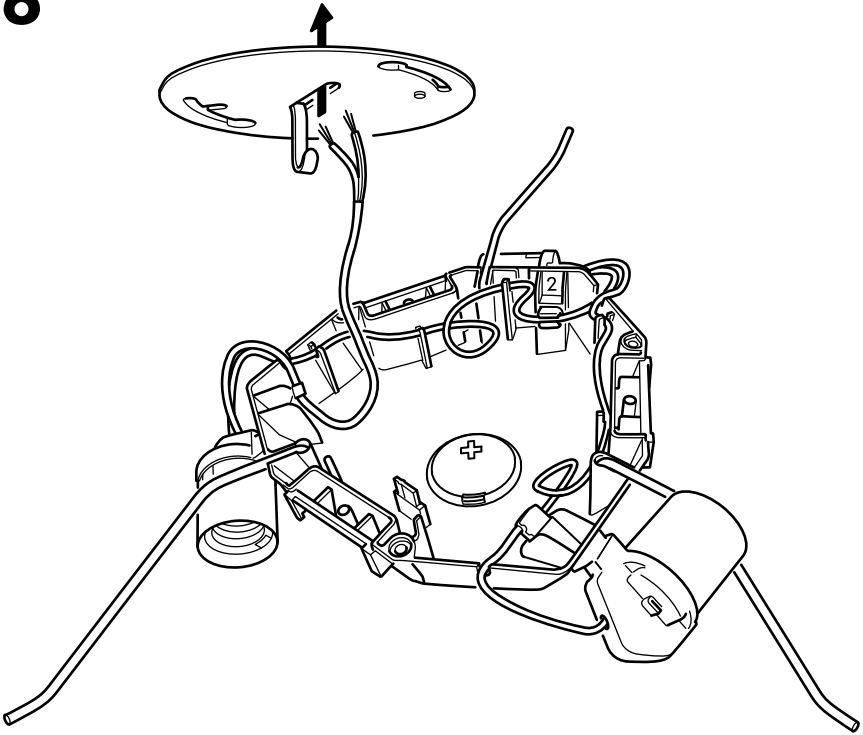


**3**





6





7



**ENGLISH**  
Live

**FRANÇAIS**  
Phase

**ESPAÑOL**  
Con corriente.

**ENGLISH**  
Neutral  
(with tracer)

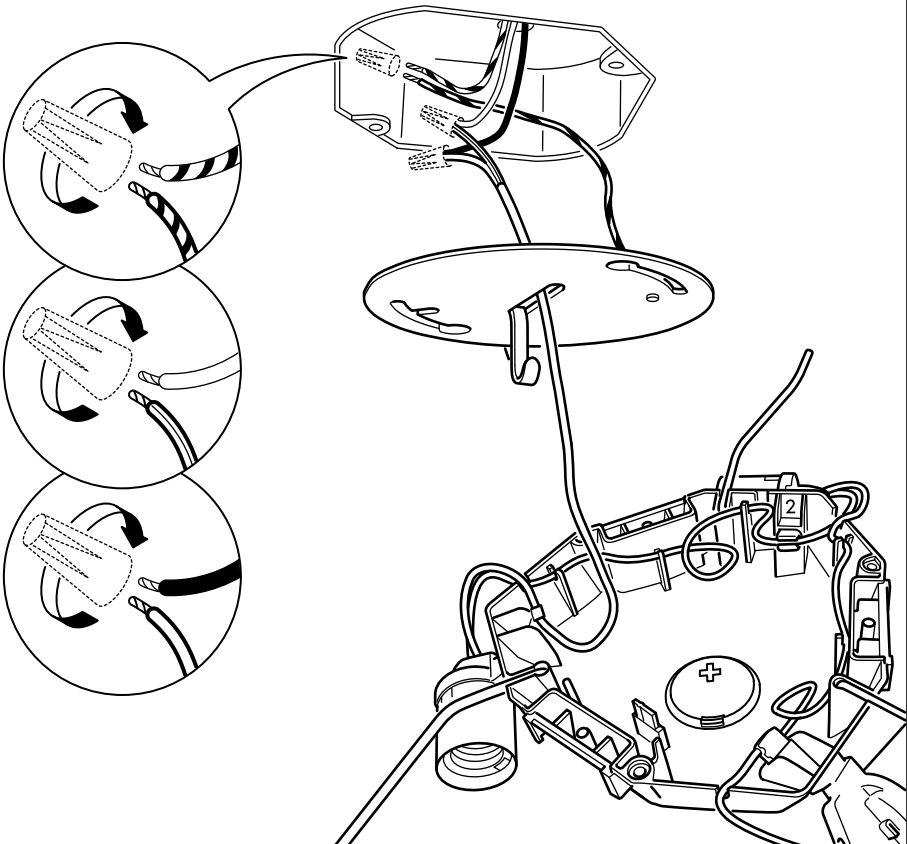
**FRANÇAIS**  
Neutre (avec  
orientateur)

**ESPAÑOL**  
Neutro (con  
orientador).

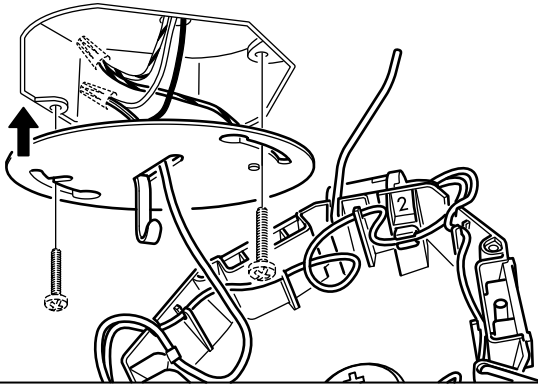
**ENGLISH**  
Earth/Ground

**FRANÇAIS**  
Terre

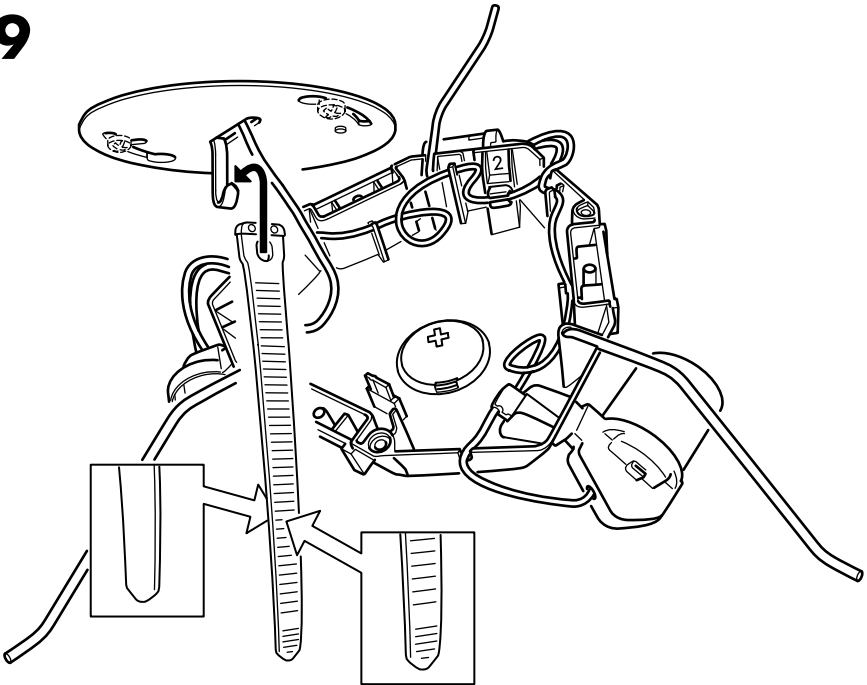
**ESPAÑOL**  
Tierra



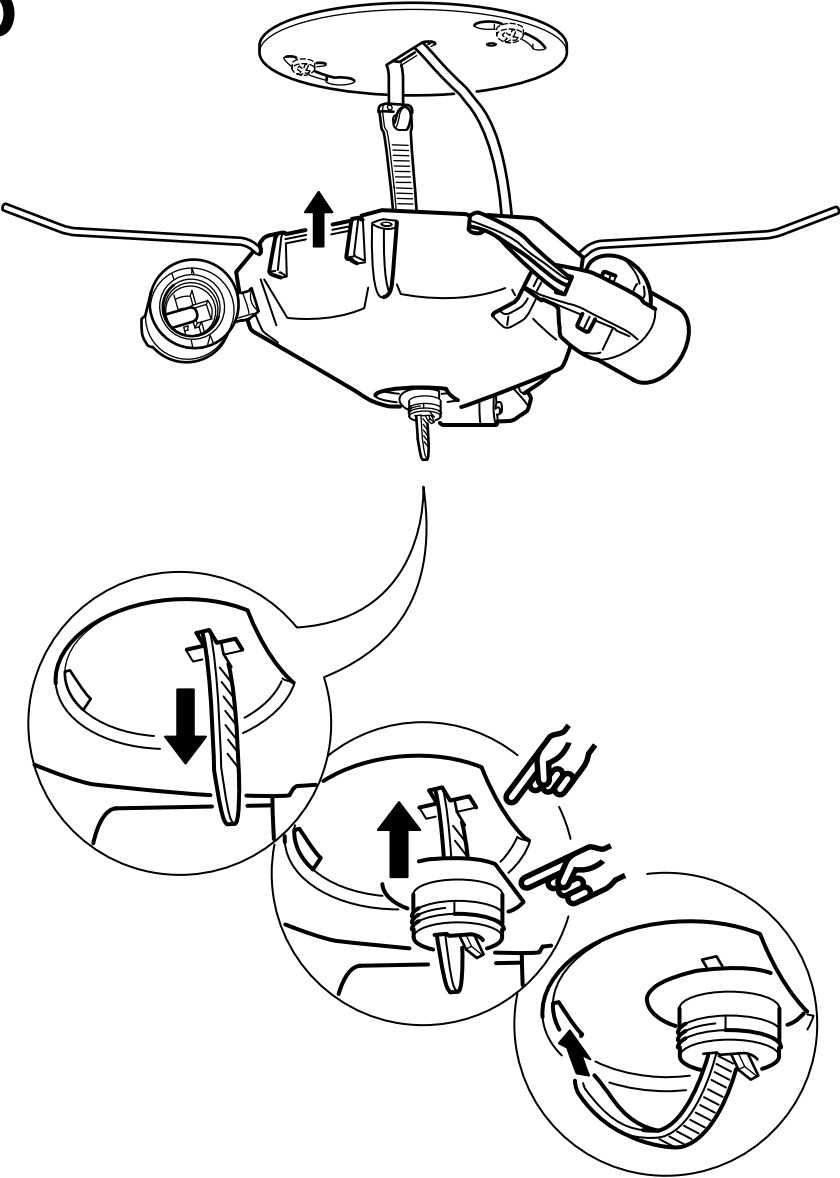
8



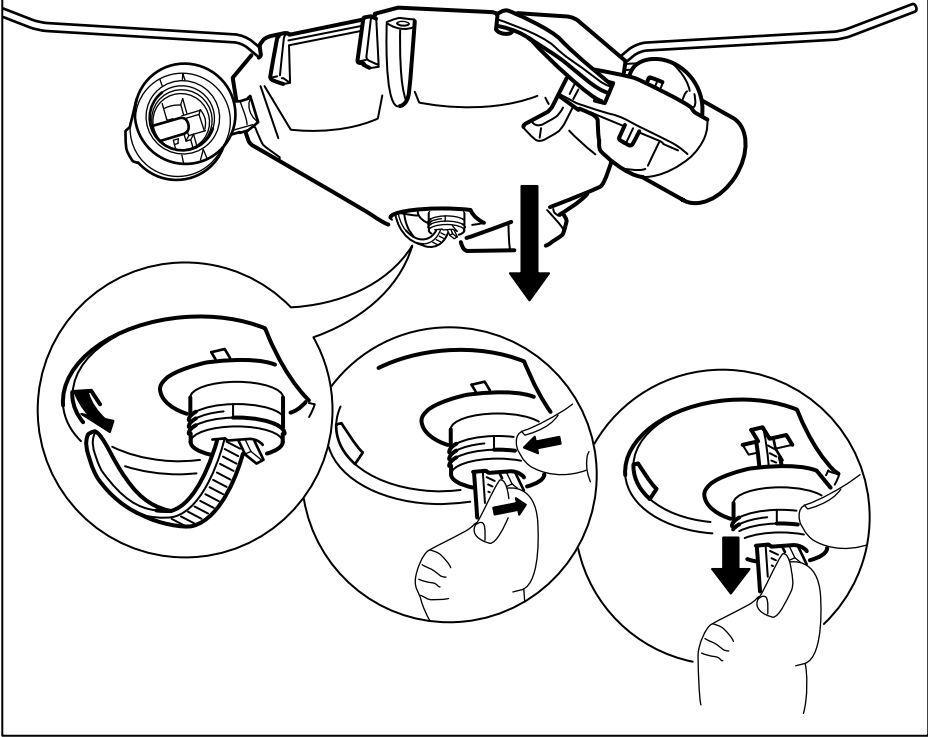
9



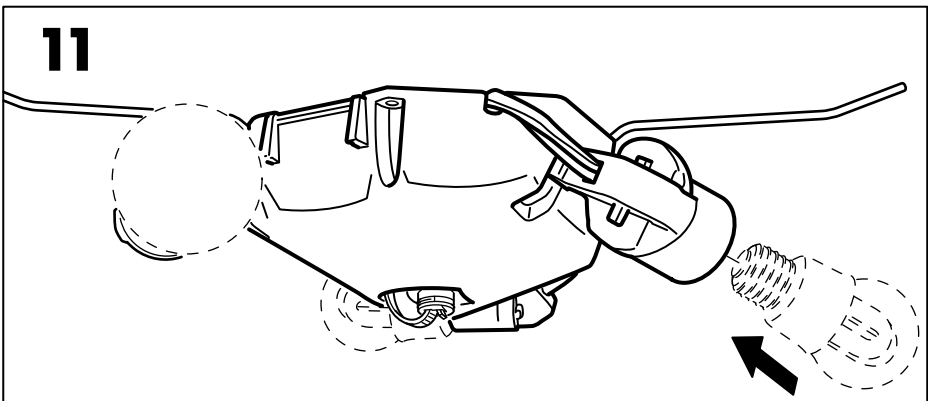
10



**i**

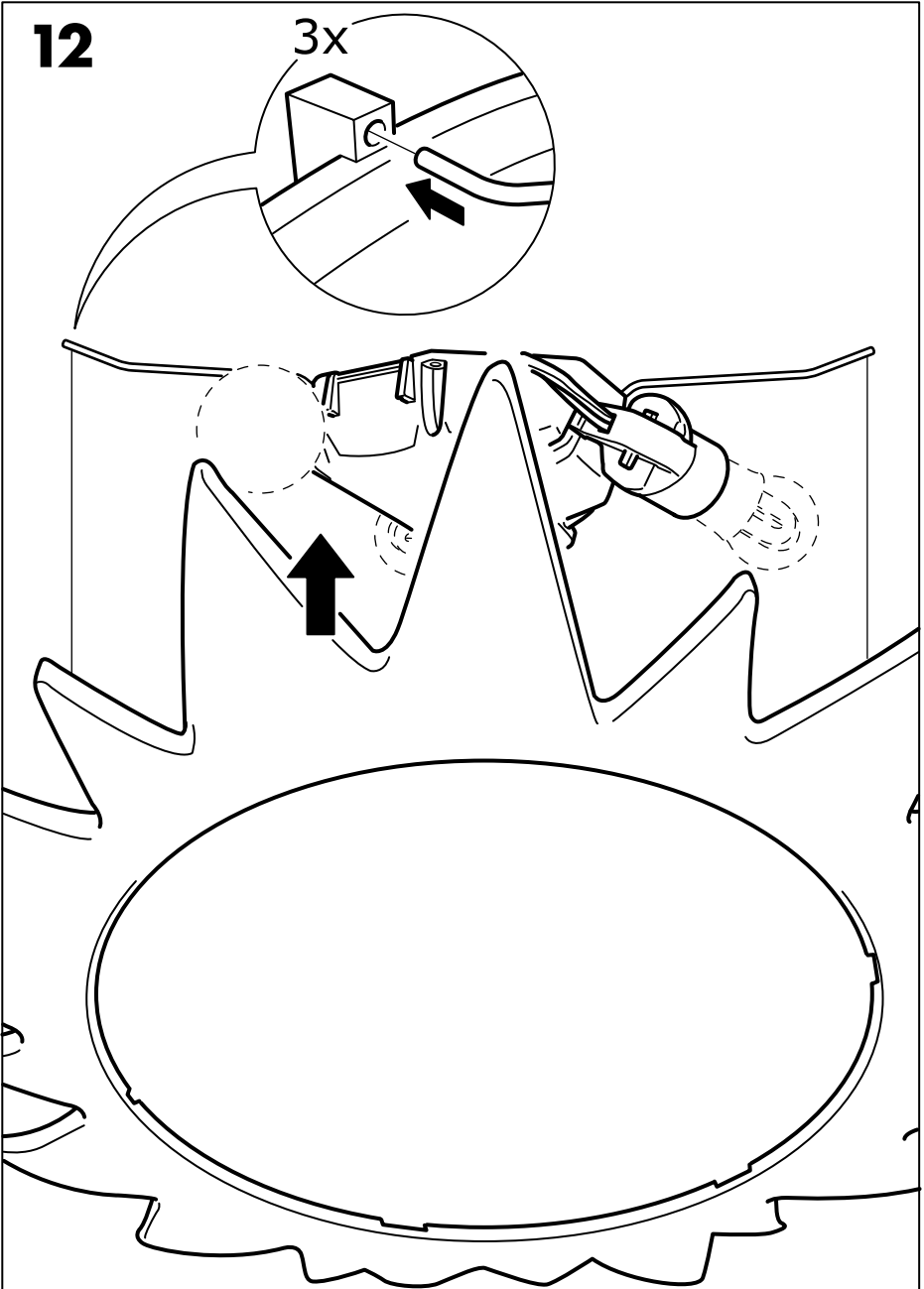


**11**



12

3x



**13**

